

SK

Silky



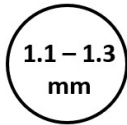
Silky is an exquisitely soft full grain aniline drum dyed leather, with a mild two-tone spray effect on the finishing coat. Its smooth finish and polishing effect gives an incredibly fluffy soft and rich supple warm feel with varying natural milled grain texture.

Color shading varies from hide to hide due its aniline finishing, which adds to the natural characteristics of the leather.

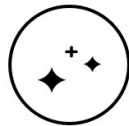
Handling of this leather is very important, as it is sensitive to scratches due to very light surface protection.



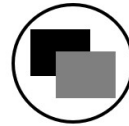
Full Aniline
Leather



Thickness



Slight Gloss



Two Tone

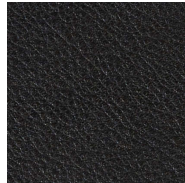


Colour Variation

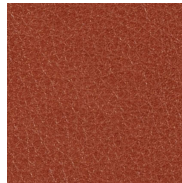
Colour Collections



SK-075D
COGNAC



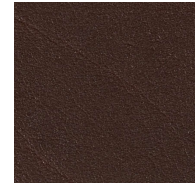
SK-076D
BLACK



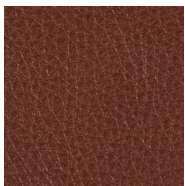
SK-077D
TAN



SK-097D
DARK BROWN



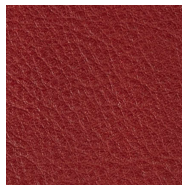
SK-292E
DARK CHOCOLATE



SK-297E
CUMIN



SK-417E
COCOA



SK-490E
CLARET



SK-598D
CARMEL

